
Adjust Rear Leg Bracket

M1C-H360/590

Installation Instructions

Contents

Section 1 - Safety Instruction	1
Section 2 - Adjustable rear leg bracket introduction	2
Parts List	3
Section 3 - Installation Procedures	4
Installation diagram	4
Section 4 - Tips for Bolt Installation	6
Bolt torque	6
Section 5 - After Installation	7
Check After Installation	7
Daily Maintenance	7

Section 1 - Safety Instruction



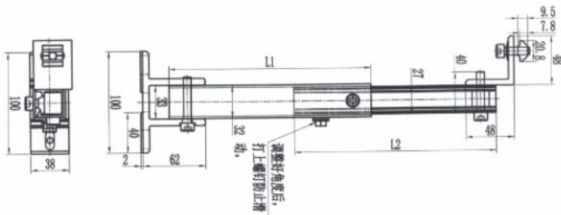
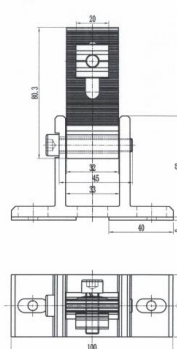


Warning

- 1) Two people are required to lift the module, handle them with care.
- 2) The products have sharp edge. Please wear gloves and protective clothing in order to prevent injury.
- 3) Check the components in the carton. Do not proceed in case shortage of components, ask your distributor for help.
- 4) Please follow up the steps, otherwise you might need to rework.
- 5) Fasten the bolts and clamps tightly in each step, otherwise the components and solar panels might fall.
- 6) Put the screws & nuts on clean place during installation. Clean them in case falling to ground.
- 7) After the installation and during daily using, should check the status of bolts/nuts after strong wind weather, and fasten them in case loosen.

Section 2 – Adjustable rear leg bracket introduction

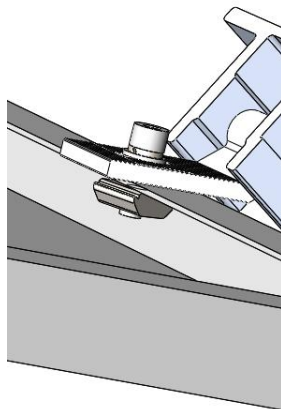
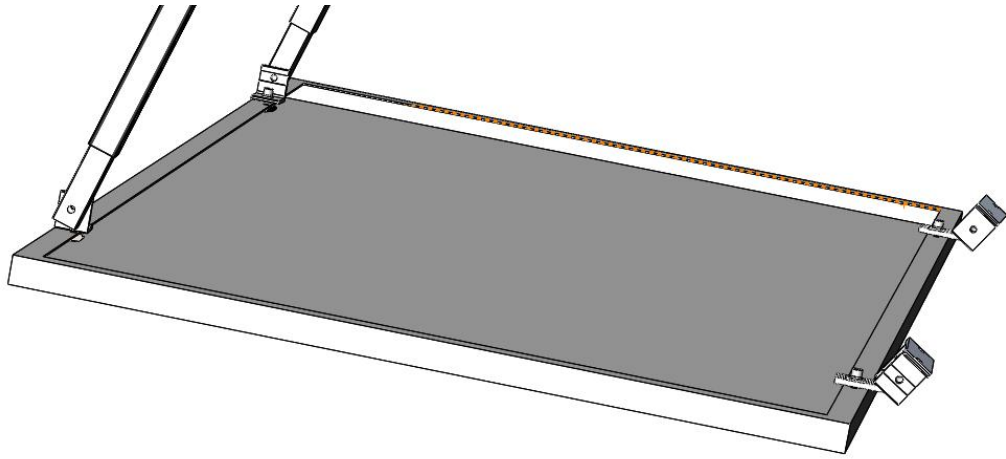
Product	Adjustable rear leg bracket (M1C-H360)
Application	Ground/Roof
Tilt Angle	15°-30°/30°-60°
Material	AL6005-T5/SUS304
Panel Layout	Landscape
Suitable Panel Width	≤1200mm
Design Standard	AS/NZS 1170, DIN 1055, JIS C8955: 2017, International Building Code IBC 200
G.W.	1.9kg/2.5kg

Parts Listⁱ

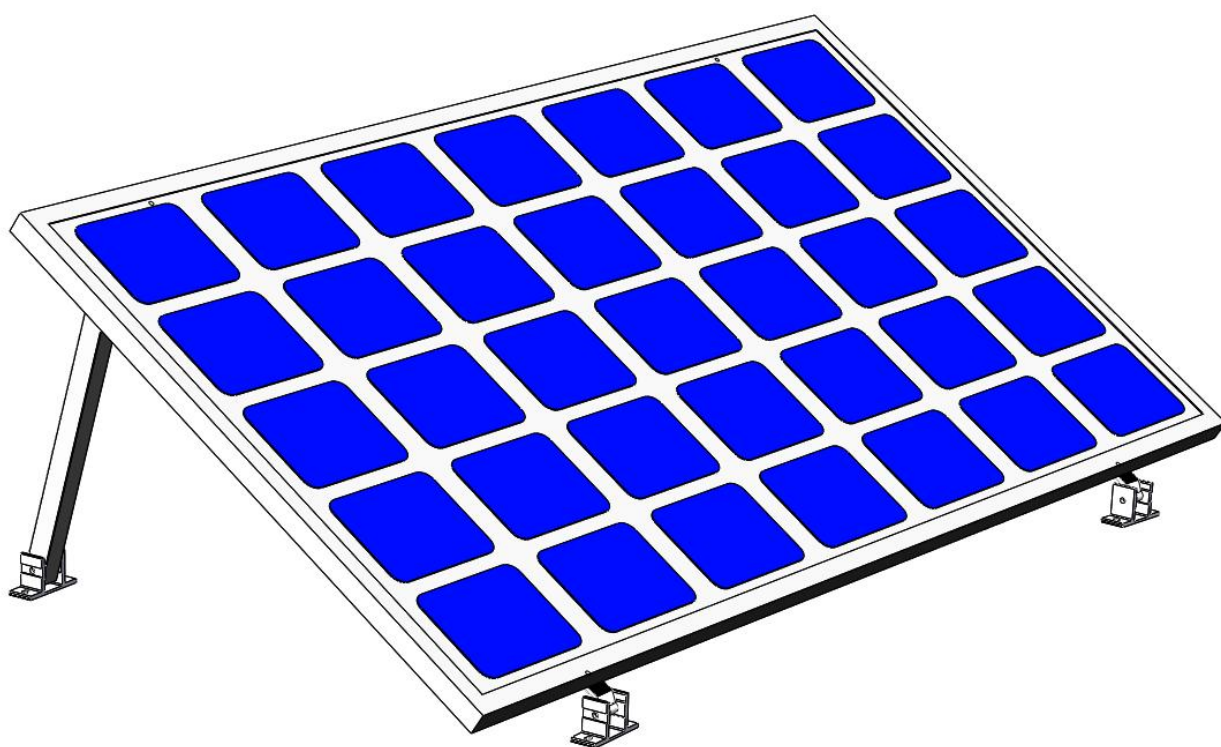
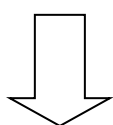
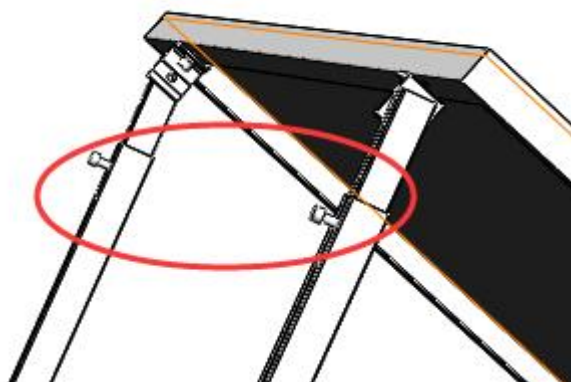
Item	Spec	Qty	Item	Spec	Qty																																																																																																																																																																																																																																																																																																																																																																																																																																																																																																
Rear leg	15° -30° : L1=L2=360mm 30° -60° L1=L2=660mm	2 pcs	Front leg	1250mm	2 pcs																																																																																																																																																																																																																																																																																																																																																																																																																																																																																																
			 <p>技术要求: 1.产品表面无划伤、无刮痕、边线无毛边、无角、毛刺等; 2.产品必须严格按照设计工艺要求和产品有关的标准进行装配; 3.未经公差按 (GB/T 1804-2000) 公差等级M (中等级); 4.大角腿三颗木螺钉不进行涂装, 按点数量, 另行包装。</p> <table><tr><th>序号</th><th>物料名称</th><th>规格/型号</th><th>数量</th><th>备注</th></tr><tr><td>6</td><td>80-4040, 8.00</td><td>20-40圆螺母</td><td>2</td><td>GB5419</td></tr><tr><td>7</td><td>3076, 6.50-2006</td><td>螺母垫圈</td><td>2</td><td>EPDM</td></tr><tr><td>8</td><td>GB/T 75-1-2008</td><td>内六角圆柱头螺钉</td><td>1</td><td>GB5394</td></tr><tr><td>9</td><td>GB/T 75-1-2008</td><td>内六角圆柱头螺钉</td><td>1</td><td>GB5394</td></tr><tr><td>10</td><td>GB/T 75-1-2008</td><td>内六角圆柱头螺钉</td><td>1</td><td>GB5394</td></tr><tr><td>11</td><td>GB/T 75-1-2008</td><td>内六角圆柱头螺钉</td><td>1</td><td>GB5394</td></tr><tr><td>12</td><td>GB/T 75-1-2008</td><td>内六角圆柱头螺钉</td><td>1</td><td>GB5394</td></tr><tr><td>13</td><td>GB/T 75-1-2008</td><td>内六角圆柱头螺钉</td><td>1</td><td>GB5394</td></tr><tr><td>14</td><td>GB/T 75-1-2008</td><td>内六角圆柱头螺钉</td><td>1</td><td>GB5394</td></tr><tr><td>15</td><td>GB/T 75-1-2008</td><td>内六角圆柱头螺钉</td><td>1</td><td>GB5394</td></tr><tr><td>16</td><td>GB/T 75-1-2008</td><td>内六角圆柱头螺钉</td><td>1</td><td>GB5394</td></tr><tr><td>17</td><td>GB/T 75-1-2008</td><td>内六角圆柱头螺钉</td><td>1</td><td>GB5394</td></tr><tr><td>18</td><td>GB/T 75-1-2008</td><td>内六角圆柱头螺钉</td><td>1</td><td>GB5394</td></tr><tr><td>19</td><td>GB/T 75-1-2008</td><td>内六角圆柱头螺钉</td><td>1</td><td>GB5394</td></tr><tr><td>20</td><td>GB/T 75-1-2008</td><td>内六角圆柱头螺钉</td><td>1</td><td>GB5394</td></tr><tr><td>21</td><td>GB/T 75-1-2008</td><td>内六角圆柱头螺钉</td><td>1</td><td>GB5394</td></tr><tr><td>22</td><td>GB/T 75-1-2008</td><td>内六角圆柱头螺钉</td><td>1</td><td>GB5394</td></tr><tr><td>23</td><td>GB/T 75-1-2008</td><td>内六角圆柱头螺钉</td><td>1</td><td>GB5394</td></tr><tr><td>24</td><td>GB/T 75-1-2008</td><td>内六角圆柱头螺钉</td><td>1</td><td>GB5394</td></tr><tr><td>25</td><td>GB/T 75-1-2008</td><td>内六角圆柱头螺钉</td><td>1</td><td>GB5394</td></tr><tr><td>26</td><td>GB/T 75-1-2008</td><td>内六角圆柱头螺钉</td><td>1</td><td>GB5394</td></tr><tr><td>27</td><td>GB/T 75-1-2008</td><td>内六角圆柱头螺钉</td><td>1</td><td>GB5394</td></tr><tr><td>28</td><td>GB/T 75-1-2008</td><td>内六角圆柱头螺钉</td><td>1</td><td>GB5394</td></tr><tr><td>29</td><td>GB/T 75-1-2008</td><td>内六角圆柱头螺钉</td><td>1</td><td>GB5394</td></tr><tr><td>30</td><td>GB/T 75-1-2008</td><td>内六角圆柱头螺钉</td><td>1</td><td>GB5394</td></tr><tr><td>31</td><td>GB/T 75-1-2008</td><td>内六角圆柱头螺钉</td><td>1</td><td>GB5394</td></tr><tr><td>32</td><td>GB/T 75-1-2008</td><td>内六角圆柱头螺钉</td><td>1</td><td>GB5394</td></tr><tr><td>33</td><td>GB/T 75-1-2008</td><td>内六角圆柱头螺钉</td><td>1</td><td>GB5394</td></tr><tr><td>34</td><td>GB/T 75-1-2008</td><td>内六角圆柱头螺钉</td><td>1</td><td>GB5394</td></tr><tr><td>35</td><td>GB/T 75-1-2008</td><td>内六角圆柱头螺钉</td><td>1</td><td>GB5394</td></tr><tr><td>36</td><td>GB/T 75-1-2008</td><td>内六角圆柱头螺钉</td><td>1</td><td>GB5394</td></tr><tr><td>37</td><td>GB/T 75-1-2008</td><td>内六角圆柱头螺钉</td><td>1</td><td>GB5394</td></tr><tr><td>38</td><td>GB/T 75-1-2008</td><td>内六角圆柱头螺钉</td><td>1</td><td>GB5394</td></tr><tr><td>39</td><td>GB/T 75-1-2008</td><td>内六角圆柱头螺钉</td><td>1</td><td>GB5394</td></tr><tr><td>40</td><td>GB/T 75-1-2008</td><td>内六角圆柱头螺钉</td><td>1</td><td>GB5394</td></tr><tr><td>41</td><td>GB/T 75-1-2008</td><td>内六角圆柱头螺钉</td><td>1</td><td>GB5394</td></tr><tr><td>42</td><td>GB/T 75-1-2008</td><td>内六角圆柱头螺钉</td><td>1</td><td>GB5394</td></tr><tr><td>43</td><td>GB/T 75-1-2008</td><td>内六角圆柱头螺钉</td><td>1</td><td>GB5394</td></tr><tr><td>44</td><td>GB/T 75-1-2008</td><td>内六角圆柱头螺钉</td><td>1</td><td>GB5394</td></tr><tr><td>45</td><td>GB/T 75-1-2008</td><td>内六角圆柱头螺钉</td><td>1</td><td>GB5394</td></tr><tr><td>46</td><td>GB/T 75-1-2008</td><td>内六角圆柱头螺钉</td><td>1</td><td>GB5394</td></tr><tr><td>47</td><td>GB/T 75-1-2008</td><td>内六角圆柱头螺钉</td><td>1</td><td>GB5394</td></tr><tr><td>48</td><td>GB/T 75-1-2008</td><td>内六角圆柱头螺钉</td><td>1</td><td>GB5394</td></tr><tr><td>49</td><td>GB/T 75-1-2008</td><td>内六角圆柱头螺钉</td><td>1</td><td>GB5394</td></tr><tr><td>50</td><td>GB/T 75-1-2008</td><td>内六角圆柱头螺钉</td><td>1</td><td>GB5394</td></tr><tr><td>51</td><td>GB/T 75-1-2008</td><td>内六角圆柱头螺钉</td><td>1</td><td>GB5394</td></tr><tr><td>52</td><td>GB/T 75-1-2008</td><td>内六角圆柱头螺钉</td><td>1</td><td>GB5394</td></tr><tr><td>53</td><td>GB/T 75-1-2008</td><td>内六角圆柱头螺钉</td><td>1</td><td>GB5394</td></tr><tr><td>54</td><td>GB/T 75-1-2008</td><td>内六角圆柱头螺钉</td><td>1</td><td>GB5394</td></tr><tr><td>55</td><td>GB/T 75-1-2008</td><td>内六角圆柱头螺钉</td><td>1</td><td>GB5394</td></tr><tr><td>56</td><td>GB/T 75-1-2008</td><td>内六角圆柱头螺钉</td><td>1</td><td>GB5394</td></tr><tr><td>57</td><td>GB/T 75-1-2008</td><td>内六角圆柱头螺钉</td><td>1</td><td>GB5394</td></tr><tr><td>58</td><td>GB/T 75-1-2008</td><td>内六角圆柱头螺钉</td><td>1</td><td>GB5394</td></tr><tr><td>59</td><td>GB/T 75-1-2008</td><td>内六角圆柱头螺钉</td><td>1</td><td>GB5394</td></tr><tr><td>60</td><td>GB/T 75-1-2008</td><td>内六角圆柱头螺钉</td><td>1</td><td>GB5394</td></tr><tr><td>61</td><td>GB/T 75-1-2008</td><td>内六角圆柱头螺钉</td><td>1</td><td>GB5394</td></tr><tr><td>62</td><td>GB/T 75-1-2008</td><td>内六角圆柱头螺钉</td><td>1</td><td>GB5394</td></tr><tr><td>63</td><td>GB/T 75-1-2008</td><td>内六角圆柱头螺钉</td><td>1</td><td>GB5394</td></tr><tr><td>64</td><td>GB/T 75-1-2008</td><td>内六角圆柱头螺钉</td><td>1</td><td>GB5394</td></tr><tr><td>65</td><td>GB/T 75-1-2008</td><td>内六角圆柱头螺钉</td><td>1</td><td>GB5394</td></tr><tr><td>66</td><td>GB/T 75-1-2008</td><td>内六角圆柱头螺钉</td><td>1</td><td>GB5394</td></tr><tr><td>67</td><td>GB/T 75-1-2008</td><td>内六角圆柱头螺钉</td><td>1</td><td>GB5394</td></tr><tr><td>68</td><td>GB/T 75-1-2008</td><td>内六角圆柱头螺钉</td><td>1</td><td>GB5394</td></tr><tr><td>69</td><td>GB/T 75-1-2008</td><td>内六角圆柱头螺钉</td><td>1</td><td>GB5394</td></tr><tr><td>70</td><td>GB/T 75-1-2008</td><td>内六角圆柱头螺钉</td><td>1</td><td>GB5394</td></tr><tr><td>71</td><td>GB/T 75-1-2008</td><td>内六角圆柱头螺钉</td><td>1</td><td>GB5394</td></tr><tr><td>72</td><td>GB/T 75-1-2008</td><td>内六角圆柱头螺钉</td><td>1</td><td>GB5394</td></tr><tr><td>73</td><td>GB/T 75-1-2008</td><td>内六角圆柱头螺钉</td><td>1</td><td>GB5394</td></tr><tr><td>74</td><td>GB/T 75-1-2008</td><td>内六角圆柱头螺钉</td><td>1</td><td>GB5394</td></tr><tr><td>75</td><td>GB/T 75-1-2008</td><td>内六角圆柱头螺钉</td><td>1</td><td>GB5394</td></tr><tr><td>76</td><td>GB/T 75-1-2008</td><td>内六角圆柱头螺钉</td><td>1</td><td>GB5394</td></tr><tr><td>77</td><td>GB/T 75-1-2008</td><td>内六角圆柱头螺钉</td><td>1</td><td>GB5394</td></tr><tr><td>78</td><td>GB/T 75-1-2008</td><td>内六角圆柱头螺钉</td><td>1</td><td>GB5394</td></tr><tr><td>79</td><td>GB/T 75-1-2008</td><td>内六角圆柱头螺钉</td><td>1</td><td>GB5394</td></tr><tr><td>80</td><td>GB/T 75-1-2008</td><td>内六角圆柱头螺钉</td><td>1</td><td>GB5394</td></tr><tr><td>81</td><td>GB/T 75-1-2008</td><td>内六角圆柱头螺钉</td><td>1</td><td>GB5394</td></tr><tr><td>82</td><td>GB/T 75-1-2008</td><td>内六角圆柱头螺钉</td><td>1</td><td>GB5394</td></tr><tr><td>83</td><td>GB/T 75-1-2008</td><td>内六角圆柱头螺钉</td><td>1</td><td>GB5394</td></tr><tr><td>84</td><td>GB/T 75-1-2008</td><td>内六角圆柱头螺钉</td><td>1</td><td>GB5394</td></tr><tr><td>85</td><td>GB/T 75-1-2008</td><td>内六角圆柱头螺钉</td><td>1</td><td>GB5394</td></tr><tr><td>86</td><td>GB/T 75-1-2008</td><td>内六角圆柱头螺钉</td><td>1</td><td>GB5394</td></tr><tr><td>87</td><td>GB/T 75-1-2008</td><td>内六角圆柱头螺钉</td><td>1</td><td>GB5394</td></tr><tr><td>88</td><td>GB/T 75-1-2008</td><td>内六角圆柱头螺钉</td><td>1</td><td>GB5394</td></tr><tr><td>89</td><td>GB/T 75-1-2008</td><td>内六角圆柱头螺钉</td><td>1</td><td>GB5394</td></tr><tr><td>90</td><td>GB/T 75-1-2008</td><td>内六角圆柱头螺钉</td><td>1</td><td>GB5394</td></tr><tr><td>91</td><td>GB/T 75-1-2008</td><td>内六角圆柱头螺钉</td><td>1</td><td>GB5394</td></tr><tr><td>92</td><td>GB/T 75-1-2008</td><td>内六角圆柱头螺钉</td><td>1</td><td>GB5394</td></tr><tr><td>93</td><td>GB/T 75-1-2008</td><td>内六角圆柱头螺钉</td><td>1</td><td>GB5394</td></tr><tr><td>94</td><td>GB/T 75-1-2008</td><td>内六角圆柱头螺钉</td><td>1</td><td>GB5394</td></tr><tr><td>95</td><td>GB/T 75-1-2008</td><td>内六角圆柱头螺钉</td><td>1</td><td>GB5394</td></tr><tr><td>96</td><td>GB/T 75-1-2008</td><td>内六角圆柱头螺钉</td><td>1</td><td>GB5394</td></tr><tr><td>97</td><td>GB/T 75-1-2008</td><td>内六角圆柱头螺钉</td><td>1</td><td>GB5394</td></tr><tr><td>98</td><td>GB/T 75-1-2008</td><td>内六角圆柱头螺钉</td><td>1</td><td>GB5394</td></tr><tr><td>99</td><td>GB/T 75-1-2008</td><td>内六角圆柱头螺钉</td><td>1</td><td>GB5394</td></tr><tr><td>100</td><td>GB/T 75-1-2008</td><td>内六角圆柱头螺钉</td><td>1</td><td>GB5394</td></tr></table>			序号	物料名称	规格/型号	数量	备注	6	80-4040, 8.00	20-40圆螺母	2	GB5419	7	3076, 6.50-2006	螺母垫圈	2	EPDM	8	GB/T 75-1-2008	内六角圆柱头螺钉	1	GB5394	9	GB/T 75-1-2008	内六角圆柱头螺钉	1	GB5394	10	GB/T 75-1-2008	内六角圆柱头螺钉	1	GB5394	11	GB/T 75-1-2008	内六角圆柱头螺钉	1	GB5394	12	GB/T 75-1-2008	内六角圆柱头螺钉	1	GB5394	13	GB/T 75-1-2008	内六角圆柱头螺钉	1	GB5394	14	GB/T 75-1-2008	内六角圆柱头螺钉	1	GB5394	15	GB/T 75-1-2008	内六角圆柱头螺钉	1	GB5394	16	GB/T 75-1-2008	内六角圆柱头螺钉	1	GB5394	17	GB/T 75-1-2008	内六角圆柱头螺钉	1	GB5394	18	GB/T 75-1-2008	内六角圆柱头螺钉	1	GB5394	19	GB/T 75-1-2008	内六角圆柱头螺钉	1	GB5394	20	GB/T 75-1-2008	内六角圆柱头螺钉	1	GB5394	21	GB/T 75-1-2008	内六角圆柱头螺钉	1	GB5394	22	GB/T 75-1-2008	内六角圆柱头螺钉	1	GB5394	23	GB/T 75-1-2008	内六角圆柱头螺钉	1	GB5394	24	GB/T 75-1-2008	内六角圆柱头螺钉	1	GB5394	25	GB/T 75-1-2008	内六角圆柱头螺钉	1	GB5394	26	GB/T 75-1-2008	内六角圆柱头螺钉	1	GB5394	27	GB/T 75-1-2008	内六角圆柱头螺钉	1	GB5394	28	GB/T 75-1-2008	内六角圆柱头螺钉	1	GB5394	29	GB/T 75-1-2008	内六角圆柱头螺钉	1	GB5394	30	GB/T 75-1-2008	内六角圆柱头螺钉	1	GB5394	31	GB/T 75-1-2008	内六角圆柱头螺钉	1	GB5394	32	GB/T 75-1-2008	内六角圆柱头螺钉	1	GB5394	33	GB/T 75-1-2008	内六角圆柱头螺钉	1	GB5394	34	GB/T 75-1-2008	内六角圆柱头螺钉	1	GB5394	35	GB/T 75-1-2008	内六角圆柱头螺钉	1	GB5394	36	GB/T 75-1-2008	内六角圆柱头螺钉	1	GB5394	37	GB/T 75-1-2008	内六角圆柱头螺钉	1	GB5394	38	GB/T 75-1-2008	内六角圆柱头螺钉	1	GB5394	39	GB/T 75-1-2008	内六角圆柱头螺钉	1	GB5394	40	GB/T 75-1-2008	内六角圆柱头螺钉	1	GB5394	41	GB/T 75-1-2008	内六角圆柱头螺钉	1	GB5394	42	GB/T 75-1-2008	内六角圆柱头螺钉	1	GB5394	43	GB/T 75-1-2008	内六角圆柱头螺钉	1	GB5394	44	GB/T 75-1-2008	内六角圆柱头螺钉	1	GB5394	45	GB/T 75-1-2008	内六角圆柱头螺钉	1	GB5394	46	GB/T 75-1-2008	内六角圆柱头螺钉	1	GB5394	47	GB/T 75-1-2008	内六角圆柱头螺钉	1	GB5394	48	GB/T 75-1-2008	内六角圆柱头螺钉	1	GB5394	49	GB/T 75-1-2008	内六角圆柱头螺钉	1	GB5394	50	GB/T 75-1-2008	内六角圆柱头螺钉	1	GB5394	51	GB/T 75-1-2008	内六角圆柱头螺钉	1	GB5394	52	GB/T 75-1-2008	内六角圆柱头螺钉	1	GB5394	53	GB/T 75-1-2008	内六角圆柱头螺钉	1	GB5394	54	GB/T 75-1-2008	内六角圆柱头螺钉	1	GB5394	55	GB/T 75-1-2008	内六角圆柱头螺钉	1	GB5394	56	GB/T 75-1-2008	内六角圆柱头螺钉	1	GB5394	57	GB/T 75-1-2008	内六角圆柱头螺钉	1	GB5394	58	GB/T 75-1-2008	内六角圆柱头螺钉	1	GB5394	59	GB/T 75-1-2008	内六角圆柱头螺钉	1	GB5394	60	GB/T 75-1-2008	内六角圆柱头螺钉	1	GB5394	61	GB/T 75-1-2008	内六角圆柱头螺钉	1	GB5394	62	GB/T 75-1-2008	内六角圆柱头螺钉	1	GB5394	63	GB/T 75-1-2008	内六角圆柱头螺钉	1	GB5394	64	GB/T 75-1-2008	内六角圆柱头螺钉	1	GB5394	65	GB/T 75-1-2008	内六角圆柱头螺钉	1	GB5394	66	GB/T 75-1-2008	内六角圆柱头螺钉	1	GB5394	67	GB/T 75-1-2008	内六角圆柱头螺钉	1	GB5394	68	GB/T 75-1-2008	内六角圆柱头螺钉	1	GB5394	69	GB/T 75-1-2008	内六角圆柱头螺钉	1	GB5394	70	GB/T 75-1-2008	内六角圆柱头螺钉	1	GB5394	71	GB/T 75-1-2008	内六角圆柱头螺钉	1	GB5394	72	GB/T 75-1-2008	内六角圆柱头螺钉	1	GB5394	73	GB/T 75-1-2008	内六角圆柱头螺钉	1	GB5394	74	GB/T 75-1-2008	内六角圆柱头螺钉	1	GB5394	75	GB/T 75-1-2008	内六角圆柱头螺钉	1	GB5394	76	GB/T 75-1-2008	内六角圆柱头螺钉	1	GB5394	77	GB/T 75-1-2008	内六角圆柱头螺钉	1	GB5394	78	GB/T 75-1-2008	内六角圆柱头螺钉	1	GB5394	79	GB/T 75-1-2008	内六角圆柱头螺钉	1	GB5394	80	GB/T 75-1-2008	内六角圆柱头螺钉	1	GB5394	81	GB/T 75-1-2008	内六角圆柱头螺钉	1	GB5394	82	GB/T 75-1-2008	内六角圆柱头螺钉	1	GB5394	83	GB/T 75-1-2008	内六角圆柱头螺钉	1	GB5394	84	GB/T 75-1-2008	内六角圆柱头螺钉	1	GB5394	85	GB/T 75-1-2008	内六角圆柱头螺钉	1	GB5394	86	GB/T 75-1-2008	内六角圆柱头螺钉	1	GB5394	87	GB/T 75-1-2008	内六角圆柱头螺钉	1	GB5394	88	GB/T 75-1-2008	内六角圆柱头螺钉	1	GB5394	89	GB/T 75-1-2008	内六角圆柱头螺钉	1	GB5394	90	GB/T 75-1-2008	内六角圆柱头螺钉	1	GB5394	91	GB/T 75-1-2008	内六角圆柱头螺钉	1	GB5394	92	GB/T 75-1-2008	内六角圆柱头螺钉	1	GB5394	93	GB/T 75-1-2008	内六角圆柱头螺钉	1	GB5394	94	GB/T 75-1-2008	内六角圆柱头螺钉	1	GB5394	95	GB/T 75-1-2008	内六角圆柱头螺钉	1	GB5394	96	GB/T 75-1-2008	内六角圆柱头螺钉	1	GB5394	97	GB/T 75-1-2008	内六角圆柱头螺钉	1	GB5394	98	GB/T 75-1-2008	内六角圆柱头螺钉	1	GB5394	99	GB/T 75-1-2008	内六角圆柱头螺钉	1	GB5394	100	GB/T 75-1-2008	内六角圆柱头螺钉	1	GB5394
序号	物料名称	规格/型号	数量	备注																																																																																																																																																																																																																																																																																																																																																																																																																																																																																																	
6	80-4040, 8.00	20-40圆螺母	2	GB5419																																																																																																																																																																																																																																																																																																																																																																																																																																																																																																	
7	3076, 6.50-2006	螺母垫圈	2	EPDM																																																																																																																																																																																																																																																																																																																																																																																																																																																																																																	
8	GB/T 75-1-2008	内六角圆柱头螺钉	1	GB5394																																																																																																																																																																																																																																																																																																																																																																																																																																																																																																	
9	GB/T 75-1-2008	内六角圆柱头螺钉	1	GB5394																																																																																																																																																																																																																																																																																																																																																																																																																																																																																																	
10	GB/T 75-1-2008	内六角圆柱头螺钉	1	GB5394																																																																																																																																																																																																																																																																																																																																																																																																																																																																																																	
11	GB/T 75-1-2008	内六角圆柱头螺钉	1	GB5394																																																																																																																																																																																																																																																																																																																																																																																																																																																																																																	
12	GB/T 75-1-2008	内六角圆柱头螺钉	1	GB5394																																																																																																																																																																																																																																																																																																																																																																																																																																																																																																	
13	GB/T 75-1-2008	内六角圆柱头螺钉	1	GB5394																																																																																																																																																																																																																																																																																																																																																																																																																																																																																																	
14	GB/T 75-1-2008	内六角圆柱头螺钉	1	GB5394																																																																																																																																																																																																																																																																																																																																																																																																																																																																																																	
15	GB/T 75-1-2008	内六角圆柱头螺钉	1	GB5394																																																																																																																																																																																																																																																																																																																																																																																																																																																																																																	
16	GB/T 75-1-2008	内六角圆柱头螺钉	1	GB5394																																																																																																																																																																																																																																																																																																																																																																																																																																																																																																	
17	GB/T 75-1-2008	内六角圆柱头螺钉	1	GB5394																																																																																																																																																																																																																																																																																																																																																																																																																																																																																																	
18	GB/T 75-1-2008	内六角圆柱头螺钉	1	GB5394																																																																																																																																																																																																																																																																																																																																																																																																																																																																																																	
19	GB/T 75-1-2008	内六角圆柱头螺钉	1	GB5394																																																																																																																																																																																																																																																																																																																																																																																																																																																																																																	
20	GB/T 75-1-2008	内六角圆柱头螺钉	1	GB5394																																																																																																																																																																																																																																																																																																																																																																																																																																																																																																	
21	GB/T 75-1-2008	内六角圆柱头螺钉	1	GB5394																																																																																																																																																																																																																																																																																																																																																																																																																																																																																																	
22	GB/T 75-1-2008	内六角圆柱头螺钉	1	GB5394																																																																																																																																																																																																																																																																																																																																																																																																																																																																																																	
23	GB/T 75-1-2008	内六角圆柱头螺钉	1	GB5394																																																																																																																																																																																																																																																																																																																																																																																																																																																																																																	
24	GB/T 75-1-2008	内六角圆柱头螺钉	1	GB5394																																																																																																																																																																																																																																																																																																																																																																																																																																																																																																	
25	GB/T 75-1-2008	内六角圆柱头螺钉	1	GB5394																																																																																																																																																																																																																																																																																																																																																																																																																																																																																																	
26	GB/T 75-1-2008	内六角圆柱头螺钉	1	GB5394																																																																																																																																																																																																																																																																																																																																																																																																																																																																																																	
27	GB/T 75-1-2008	内六角圆柱头螺钉	1	GB5394																																																																																																																																																																																																																																																																																																																																																																																																																																																																																																	
28	GB/T 75-1-2008	内六角圆柱头螺钉	1	GB5394																																																																																																																																																																																																																																																																																																																																																																																																																																																																																																	
29	GB/T 75-1-2008	内六角圆柱头螺钉	1	GB5394																																																																																																																																																																																																																																																																																																																																																																																																																																																																																																	
30	GB/T 75-1-2008	内六角圆柱头螺钉	1	GB5394																																																																																																																																																																																																																																																																																																																																																																																																																																																																																																	
31	GB/T 75-1-2008	内六角圆柱头螺钉	1	GB5394																																																																																																																																																																																																																																																																																																																																																																																																																																																																																																	
32	GB/T 75-1-2008	内六角圆柱头螺钉	1	GB5394																																																																																																																																																																																																																																																																																																																																																																																																																																																																																																	
33	GB/T 75-1-2008	内六角圆柱头螺钉	1	GB5394																																																																																																																																																																																																																																																																																																																																																																																																																																																																																																	
34	GB/T 75-1-2008	内六角圆柱头螺钉	1	GB5394																																																																																																																																																																																																																																																																																																																																																																																																																																																																																																	
35	GB/T 75-1-2008	内六角圆柱头螺钉	1	GB5394																																																																																																																																																																																																																																																																																																																																																																																																																																																																																																	
36	GB/T 75-1-2008	内六角圆柱头螺钉	1	GB5394																																																																																																																																																																																																																																																																																																																																																																																																																																																																																																	
37	GB/T 75-1-2008	内六角圆柱头螺钉	1	GB5394																																																																																																																																																																																																																																																																																																																																																																																																																																																																																																	
38	GB/T 75-1-2008	内六角圆柱头螺钉	1	GB5394																																																																																																																																																																																																																																																																																																																																																																																																																																																																																																	
39	GB/T 75-1-2008	内六角圆柱头螺钉	1	GB5394																																																																																																																																																																																																																																																																																																																																																																																																																																																																																																	
40	GB/T 75-1-2008	内六角圆柱头螺钉	1	GB5394																																																																																																																																																																																																																																																																																																																																																																																																																																																																																																	
41	GB/T 75-1-2008	内六角圆柱头螺钉	1	GB5394																																																																																																																																																																																																																																																																																																																																																																																																																																																																																																	
42	GB/T 75-1-2008	内六角圆柱头螺钉	1	GB5394																																																																																																																																																																																																																																																																																																																																																																																																																																																																																																	
43	GB/T 75-1-2008	内六角圆柱头螺钉	1	GB5394																																																																																																																																																																																																																																																																																																																																																																																																																																																																																																	
44	GB/T 75-1-2008	内六角圆柱头螺钉	1	GB5394																																																																																																																																																																																																																																																																																																																																																																																																																																																																																																	
45	GB/T 75-1-2008	内六角圆柱头螺钉	1	GB5394																																																																																																																																																																																																																																																																																																																																																																																																																																																																																																	
46	GB/T 75-1-2008	内六角圆柱头螺钉	1	GB5394																																																																																																																																																																																																																																																																																																																																																																																																																																																																																																	
47	GB/T 75-1-2008	内六角圆柱头螺钉	1	GB5394																																																																																																																																																																																																																																																																																																																																																																																																																																																																																																	
48	GB/T 75-1-2008	内六角圆柱头螺钉	1	GB5394																																																																																																																																																																																																																																																																																																																																																																																																																																																																																																	
49	GB/T 75-1-2008	内六角圆柱头螺钉	1	GB5394																																																																																																																																																																																																																																																																																																																																																																																																																																																																																																	
50	GB/T 75-1-2008	内六角圆柱头螺钉	1	GB5394																																																																																																																																																																																																																																																																																																																																																																																																																																																																																																	
51	GB/T 75-1-2008	内六角圆柱头螺钉	1	GB5394																																																																																																																																																																																																																																																																																																																																																																																																																																																																																																	
52	GB/T 75-1-2008	内六角圆柱头螺钉	1	GB5394																																																																																																																																																																																																																																																																																																																																																																																																																																																																																																	
53	GB/T 75-1-2008	内六角圆柱头螺钉	1	GB5394																																																																																																																																																																																																																																																																																																																																																																																																																																																																																																	
54	GB/T 75-1-2008	内六角圆柱头螺钉	1	GB5394																																																																																																																																																																																																																																																																																																																																																																																																																																																																																																	
55	GB/T 75-1-2008	内六角圆柱头螺钉	1	GB5394																																																																																																																																																																																																																																																																																																																																																																																																																																																																																																	
56	GB/T 75-1-2008	内六角圆柱头螺钉	1	GB5394																																																																																																																																																																																																																																																																																																																																																																																																																																																																																																	
57	GB/T 75-1-2008	内六角圆柱头螺钉	1	GB5394																																																																																																																																																																																																																																																																																																																																																																																																																																																																																																	
58	GB/T 75-1-2008	内六角圆柱头螺钉	1	GB5394																																																																																																																																																																																																																																																																																																																																																																																																																																																																																																	
59	GB/T 75-1-2008	内六角圆柱头螺钉	1	GB5394																																																																																																																																																																																																																																																																																																																																																																																																																																																																																																	
60	GB/T 75-1-2008	内六角圆柱头螺钉	1	GB5394																																																																																																																																																																																																																																																																																																																																																																																																																																																																																																	
61	GB/T 75-1-2008	内六角圆柱头螺钉	1	GB5394																																																																																																																																																																																																																																																																																																																																																																																																																																																																																																	
62	GB/T 75-1-2008	内六角圆柱头螺钉	1	GB5394																																																																																																																																																																																																																																																																																																																																																																																																																																																																																																	
63	GB/T 75-1-2008	内六角圆柱头螺钉	1	GB5394																																																																																																																																																																																																																																																																																																																																																																																																																																																																																																	
64	GB/T 75-1-2008	内六角圆柱头螺钉	1	GB5394																																																																																																																																																																																																																																																																																																																																																																																																																																																																																																	
65	GB/T 75-1-2008	内六角圆柱头螺钉	1	GB5394																																																																																																																																																																																																																																																																																																																																																																																																																																																																																																	
66	GB/T 75-1-2008	内六角圆柱头螺钉	1	GB5394																																																																																																																																																																																																																																																																																																																																																																																																																																																																																																	
67	GB/T 75-1-2008	内六角圆柱头螺钉	1	GB5394																																																																																																																																																																																																																																																																																																																																																																																																																																																																																																	
68	GB/T 75-1-2008	内六角圆柱头螺钉	1	GB5394																																																																																																																																																																																																																																																																																																																																																																																																																																																																																																	
69	GB/T 75-1-2008	内六角圆柱头螺钉	1	GB5394																																																																																																																																																																																																																																																																																																																																																																																																																																																																																																	
70	GB/T 75-1-2008	内六角圆柱头螺钉	1	GB5394																																																																																																																																																																																																																																																																																																																																																																																																																																																																																																	
71	GB/T 75-1-2008	内六角圆柱头螺钉	1	GB5394																																																																																																																																																																																																																																																																																																																																																																																																																																																																																																	
72	GB/T 75-1-2008	内六角圆柱头螺钉	1	GB5394																																																																																																																																																																																																																																																																																																																																																																																																																																																																																																	
73	GB/T 75-1-2008	内六角圆柱头螺钉	1	GB5394																																																																																																																																																																																																																																																																																																																																																																																																																																																																																																	
74	GB/T 75-1-2008	内六角圆柱头螺钉	1	GB5394																																																																																																																																																																																																																																																																																																																																																																																																																																																																																																	
75	GB/T 75-1-2008	内六角圆柱头螺钉	1	GB5394																																																																																																																																																																																																																																																																																																																																																																																																																																																																																																	
76	GB/T 75-1-2008	内六角圆柱头螺钉	1	GB5394																																																																																																																																																																																																																																																																																																																																																																																																																																																																																																	
77	GB/T 75-1-2008	内六角圆柱头螺钉	1	GB5394																																																																																																																																																																																																																																																																																																																																																																																																																																																																																																	
78	GB/T 75-1-2008	内六角圆柱头螺钉	1	GB5394																																																																																																																																																																																																																																																																																																																																																																																																																																																																																																	
79	GB/T 75-1-2008	内六角圆柱头螺钉	1	GB5394																																																																																																																																																																																																																																																																																																																																																																																																																																																																																																	
80	GB/T 75-1-2008	内六角圆柱头螺钉	1	GB5394																																																																																																																																																																																																																																																																																																																																																																																																																																																																																																	
81	GB/T 75-1-2008	内六角圆柱头螺钉	1	GB5394																																																																																																																																																																																																																																																																																																																																																																																																																																																																																																	
82	GB/T 75-1-2008	内六角圆柱头螺钉	1	GB5394																																																																																																																																																																																																																																																																																																																																																																																																																																																																																																	
83	GB/T 75-1-2008	内六角圆柱头螺钉	1	GB5394																																																																																																																																																																																																																																																																																																																																																																																																																																																																																																	
84	GB/T 75-1-2008	内六角圆柱头螺钉	1	GB5394																																																																																																																																																																																																																																																																																																																																																																																																																																																																																																	
85	GB/T 75-1-2008	内六角圆柱头螺钉	1	GB5394																																																																																																																																																																																																																																																																																																																																																																																																																																																																																																	
86	GB/T 75-1-2008	内六角圆柱头螺钉	1	GB5394																																																																																																																																																																																																																																																																																																																																																																																																																																																																																																	
87	GB/T 75-1-2008	内六角圆柱头螺钉	1	GB5394																																																																																																																																																																																																																																																																																																																																																																																																																																																																																																	
88	GB/T 75-1-2008	内六角圆柱头螺钉	1	GB5394																																																																																																																																																																																																																																																																																																																																																																																																																																																																																																	
89	GB/T 75-1-2008	内六角圆柱头螺钉	1	GB5394																																																																																																																																																																																																																																																																																																																																																																																																																																																																																																	
90	GB/T 75-1-2008	内六角圆柱头螺钉	1	GB5394																																																																																																																																																																																																																																																																																																																																																																																																																																																																																																	
91	GB/T 75-1-2008	内六角圆柱头螺钉	1	GB5394																																																																																																																																																																																																																																																																																																																																																																																																																																																																																																	
92	GB/T 75-1-2008	内六角圆柱头螺钉	1	GB5394																																																																																																																																																																																																																																																																																																																																																																																																																																																																																																	
93	GB/T 75-1-2008	内六角圆柱头螺钉	1	GB5394																																																																																																																																																																																																																																																																																																																																																																																																																																																																																																	
94	GB/T 75-1-2008	内六角圆柱头螺钉	1	GB5394																																																																																																																																																																																																																																																																																																																																																																																																																																																																																																	
95	GB/T 75-1-2008	内六角圆柱头螺钉	1	GB5394																																																																																																																																																																																																																																																																																																																																																																																																																																																																																																	
96	GB/T 75-1-2008	内六角圆柱头螺钉	1	GB5394																																																																																																																																																																																																																																																																																																																																																																																																																																																																																																	
97	GB/T 75-1-2008	内六角圆柱头螺钉	1	GB5394																																																																																																																																																																																																																																																																																																																																																																																																																																																																																																	
98	GB/T 75-1-2008	内六角圆柱头螺钉	1	GB5394																																																																																																																																																																																																																																																																																																																																																																																																																																																																																																	
99	GB/T 75-1-2008	内六角圆柱头螺钉	1	GB5394																																																																																																																																																																																																																																																																																																																																																																																																																																																																																																	
100	GB/T 75-1-2008	内六角圆柱头螺钉	1	GB5394																																																																																																																																																																																																																																																																																																																																																																																																																																																																																																	
Self-tapping Screws	St 6.3 *80	8 set	Self-tapping Screws	St 6.3 * 25	2 pcs																																																																																																																																																																																																																																																																																																																																																																																																																																																																																																
																																																																																																																																																																																																																																																																																																																																																																																																																																																																																																					

Section 3 - Installation Procedures

- ◆ Remove the pre-assembled front leg and rear leg, and remove the block on the upper rotating part, pass the bolt through the hole at the bottom of the module frame, the lock and fix it with the block.



- ◆ Turn over the module, be careful not to hit the module with the front and rear legs. Put the base flat on the roof, and adjust the length of the rear legs to make the assembly reach the target angle, and then lock the adjustment bolts of the rear legs so that the telescopic rod is no longer stretching.



Section 4 - Tips for Bolt Installation

Precautions for engineering installation dimensions

1. The specific dimensions of the engineering installation are subject to the engineering construction drawings. These installation instructions are for the purpose of explaining the installation method of the product only.

Precautions when installing stainless steel fasteners

1. Because stainless steel has good ductility, it is essentially different from carbon steel; improper use will cause the bolt and nut to be unscrewed after being matched. That is, "locking" is commonly known as "biting to death". The prevention of lockup mainly includes the following aspects:

Reduce friction coefficient:

1. Ensure that the thread surface is clean (such as no sand, debris);
2. It is recommended to coat the surface with water wax or add lubricant (such as butter, 40# engine oil) during installation;

Correct operation method:

1. It must be screwed perpendicular to the axis of the thread, and must not be inclined;
2. During the tightening process, the force must be uniform, and the tightening torque cannot exceed the specified safe torque value;
3. Use a torque wrench or socket wrench as much as possible, and avoid using an adjustable wrench or an electric wrench; when using an electric wrench, try to reduce the speed as much as possible.
4. Avoid using at high temperature, do not rotate quickly when using, avoid the temperature rising rapidly and cause locking; (such as using an electric wrench, etc.)

Bolt torque

SS304 (A2-70) Bolt torque recommendation table	
Bolt Specifications	Recommended torque value (N.M)
M8	8-10
M10	18-20
M12	50-55
M14	70-75
M16	90-95

Section 5 - After Installation

Check After Installation

It needs to check the condition of all the components and parts after finishing assembling of fixed mounting system:

- Check if there is damage
- Check if there is anything forget to assemble
- Check if all the bolts locked tightly
- Check if all the solar modules assembled in accordance
- Clean the project site after assembling



Warning: It needs to check structure condition of mounting system before wiring.

Before installing the micro inverters, connecting the cable or any other electric equipments, the solar bracket and solar panels shall be mounted to the guardrail safely.

Daily Maintenance

- Maintenance of connected bolts
- Check every bolt junctions once a year, tighten them if the junction is loosen